



DYNAMIC MEMORIES

* Tandy Corp / Radio Shack Inc.

OCTOBER 1983



Model one:
ENDANGERED SPECIES?

Your Steering Committee

	Member	SBUG-80 Username	Phone

Discussion Leaders:			
	Mike McHenry	(MCHENRY)	(408) 245-4704
	Eric Brewer	(BREWER)	(408) 252-9332
	Sabri Kawash	(SABRI)	(408) 732-5484
Treasurer:			
	Larry Gunderson	(TREAS)	(408) 259-5349
Newsletter Editor:			
	Robert Byrd	(EDITOR)	(408) 732-6775
Librarians:			
(disc)	Gerry McKee	(GMCKEE)	(408) 926-4063
(tape)	Gary Dixon	(GDIXON)	(408) 262-6937
(doc.)	Bill Richerson		(408) 257-8267

Other key individuals

Cover Artist:	Dave Fox	(DAVEFOX)	(408) 374-5258
Public Relations:	Ron Carpenter	(RON)	(415) 726-3487
Host Computer:	SBUG-80	(EVERYONE)	(408) 737-SBUG
SBUG-80 Sysops:	Robert Byrd	(EDITOR)	(408) 732-6775
	Eric Brewer	(BREWER)	(408) 252-9332

If the need arises, feel free to give one of us a call.

=====

MODEL 100 COMMUNICATION

by Bill Ramsey
BILLRAM @ SBUG-80

Communication with other computers and programs is one of the greatest uses for your Mod 100, and yet, it is also one of the most mysterious! Someone called to inquire as to how one could transfer a program from the 100 (TEXT) to the Model 1 SuperScripsit word processing program. Although this seemed like a straight-forward question which needed an equally straight-forward (and easy) answer, I realized that I had not, until this time, actually attempted to transfer 100 files to SuperScripsit--even though I have used SuperScripsit almost exclusively for over one year!

Whereas many word processing programs produce files which are in ASCII format, SuperScripsit does not. There is, however, an ASCII utility option provided with

SOUTH BAY TRS-80 USERS GROUP

SuperScripsit (the opening Menu shows the following:)

***** SCRIPSIT WORD PROCESSING *****

```
<O> Open a document
<S> System setup utility
<P> Proofread a document
<C> Compress a document
<A> ASCII text conversion utility
<E> Exit to TRSDOS
```

It seemed obvious that all which would be required to make 100 files compatible with SuperScripsit would be to choose the <A> option, answer all the prompts correctly and wait for the magic conversion to take place! One thing I have long since learned about computing is that things don't always do what one might expect! When this option is chosen, the system works for a few seconds and then returns the error statement, "PAST END OF FILE." I was certain that the problem had occurred in the transfer (using MODEM80) and that MODEM80 had somehow failed to write an EOF (end of file) marker to the newly transferred file. I subsequently used SUPERZAP to examine the file, and discovered that the last byte of the file was not 00 as is required by the <A> option in SuperScripsit. It occurred to me that I had probably faced this same problem earlier when attempting to transfer files from Scripsit to SuperScripsit. In order to do this, the file must be Saved using the S,A option (SAVE in ASCII format.)

My options were now either (1) enter SUPERZAP and patch the last byte (the one following the 0D at the end of the file) or (2) load the file into Scripsit and re-save the file using the S,A option. Both of these options work correctly, but create an extra step which is an annoyance. At this writing, I have not solved the annoyance, although I have employed both frequently. I considered writing a short program to add the 00 to the end of the file, but it seemed easier for me to invoke one of the above mentioned solutions. One additional option would be to use the file created by the 100 and bypass SuperScripsit by only using Scripsit (a good program for non-complex text files.) Do any of you Mod 100 users have better solutions? Do you have hints for the Mod 100 user which might be included in this column? Send all correspondence to: William Ramsey, P.O. Box 2366, Stanford CA. 94305 or call (415) 329-9236.

F O U R P L A Y

by Ian Webb
IANWEBB @ SBUG-80

PORTABLE MODEL 4

The new computer catalog advertises a portable Model 4. Good idea, but rather late! The price is less than that for a Model 4 and the keyboard is separate like an IBM. The display is smaller, but should be adequate and there are two thin-line floppy drives. The weight is comparable to other portables, which means you need a hand truck if you are going to carry it around very long.

I wonder who might buy this machine? If I were walking in off the street to buy a computer, and saw the portable with all the features of the Model 4 and at a couple of a hundred dollars less than the Model 4, there is a very good chance that I wouldn't even consider the desk top Model 4. On the other hand, if I walked in without any computer knowledge, but had read advertisements, why would I pay \$1800 for a Portable 4 WITHOUT software, when I could buy a comparable Kaypro for a few hundred less or other make (Chameleon IBM Compatible for \$1995) WITH bundled software?

I am afraid that the low-end Radio Shack line may be a dying breed unless they examine the realities of marketing to the public as a whole. The buyer now is less sophisticated than before. Most of the technically competent or technologically curious already have computers. The people who need to be reached now are Mr. and Mrs. (Ms.?) John Q. Public. They need a machine that can be plugged in and ready to go. They don't want to pay almost as much or more for the software as they did for the machine. Perhaps the problem with Tandy is that they are trying to make big \$ off the software and they also want to sell their machines. The non software vendor, trying to sell a piece of hardware, can see spending several tens of thousands for a license to resell as many copies of software as they wish. They are mainly trying to make their machine attractive. Tandy needs to make \$ on their software AND sell hardware. I wonder if this is why they aren't bundling software.

Apparat is, according to rumors from two different sources, getting out of the Radio Shack software business. They will concentrate on the IBM machine. How many others will follow suit? The IBM PC DOS (MSDOS) is almost an industry standard and IBM has a GIGANTIC share of the market when one considers the short time they have been selling machines to the home/small user market. Even HP, noted for their independence, has come out with a personal computer using MSDOS! How long will people continue to buy Tandy machines without bundled software and mainly supported by a non-standard operating system?

My guess is that unless Tandy comes out soon with an IBM compatible machine, we will find the only people buying further low end Radio Shack machines are those who already have an investment in software and want to continue to use it.

SOUTH BAY TRS-80 USERS GROUP

If you look at the bulk of the users in our club, it seems to me that most of them are "tinkerers." They want their machine for a few "real" reasons and they mainly want to explore the ways to use the machine and "play" with new programs and see what the machine can do. They are curious and want to learn how to use a new tool. If they are lucky they have a minimal amount of real honest-to-goodness use for their machine so they justify an expensive toy or have fairly good reasons to write it off on their income tax return. (The only difference between men and boys is the cost of their toys.)

I would wonder if we will see Portable 4 machines in time for Christmas and steep drops in prices after Christmas and bundled software when Tandy realizes that they can't compete in the market given their image as TRASH 80 producers and a lack of aggressive publicity. It still seems to me in my contact with a wide variety of first-time users in the classes I teach that the majority of people still consider the RS machines as toys not worthy of serious consideration.

How will Tandy low-end machines compete against the new Apple MacIntosh or the IBM Peanut? If they reach the market before Christmas and/or if Coleco's ADAM gets to the stores, which will sell? The future is going to be interesting.

MODEL 4 SOFTWARE

Strawflower Radio Shack in Half Moon Bay has CP/M 2.2 for the Model 4, but when I visited them, they had sent all their packages for upgrading to remove bugs. They were receiving phone calls from all over the Western US wanting the package since Pickles and Trout was referring people who called them about CP/M for the Model 4 to Strawflower.

Supposedly the package is basically sound and will convert to and from 20 different disk formats. The author says that until the Model 4 supports 8" drives, he doesn't know if his CP/M will work on 8" drives with a non Tandy controller.

Radio Shack Computer Center in San Jose has Multiplan and regular Scripsit for the Model 4. Multiplan appears to only run in the main 64K. Too bad, since it will probably suffer the same problems that Visicalc does with too small a spreadsheet. The rumor is that Superscripsit will be out soon supporting the 80 column display and that there will probably be a no cost or low cost upgrade available. The first week in October they report that they expect CP/M from Tandy any time.

OTHER SOFTWARE NOTES

There is an excellent BASIC program on the bulletin board (HEADER/BAS) by Mark Sills and Pete Huntsinger which will put a title for you on a VISICALC printout and also give you the print options for setting your MX80 or MX80 compatible printer before printing your spreadsheet.

By the time you read this, there will be a BASIC program on the bulletin board, SCRIPST/BAS, which I wrote to print alphabetized lists of SuperScript files and their user comments in the block that appears at the opening menu. This program runs under NEWDOS80 V2, so don't try to use it from TRSDOS. The program will search the specified diskette for all SuperScript programs, read the information you have typed in the header block, alphabetize the entries and give you a printer and/or screen display of the entries. I find it handy to have when I have several diskettes jammed with documents that I use in teaching classes. If you use this, you may find it handy to ignore the Radio Shack prompts in the header block and just put in your own descriptive information, including dates.

Another good program is SUPLIST3/CMD and SUPLIST/CMD which are Model III and I versions of a printing program for BASIC. This program runs quickly, unlike many other "pretty listing" programs and it counts the bytes in your program and the number of lines. It makes it much easier to see what a BASIC program does by putting each statement on a separate line and spacing over so the line numbers stand out at the left.

Perhaps the disk librarian should go through the bulletin board library and start to make available diskettes of programs from the bulletin board for those who don't have access to the bulletin board or who prefer to not tie up the phone lines getting program off the bulletin board.

=====

PHONES PHONES PHONES #3

by Ronal Thompson
RONAL @ SBUG-80

This month is a really big month. You will notice that the circuit is somewhat different from the one two months ago. This one is the complete phone line interface. You can take this one as far as using it to dial with (use the 'on hook control' pin). Let's go through a few of the changes.

Some of the parts need a little explanation. The 4 op-amps are in one 14 pin ic package. There are 2 numbers given and either one may be used with no changes to the circuit connections.

I would suggest that, unless you know subtraction of signals in op-amp circuits, you build the 2-4 wire circuit

SOUTH BAY TRS-80 USERS GROUP

exactly as shown.

Two adjustments are available, and careful attention must be paid to these. I'll describe these fully later.

There are now 2 transformers on the phone line. A single transformer cannot provide the 'dc holding current' necessary to keep the phone line active, and a single transformer can cause some unacceptable distortion at higher transmit levels.

The relay on the 'ring' line is for either computer or some kind of digital (TTL) level control of 'off-hook'. Dialing with this relay is done through appropriately timed pulses. (More in a later article) It may be replaced with a switch, but my suggestion is to install the relay and a manual switch in parallel. This will give you use of the relay at a later time and immediate use of the circuit now.

Specifics about Figure 1A and the Transformers

The 2 to 4 wire converter is a subtraction circuit. It simply removes what is being transmitted from what is being received. That way, the signal on 'RXCAR' is only what has been transmitted from the modem or person on the other end of the phone line. R8 is a matching resistor. The value of the 2 transformers and R8 are equal to about 600 ohms, which is the impedance of the phone line.

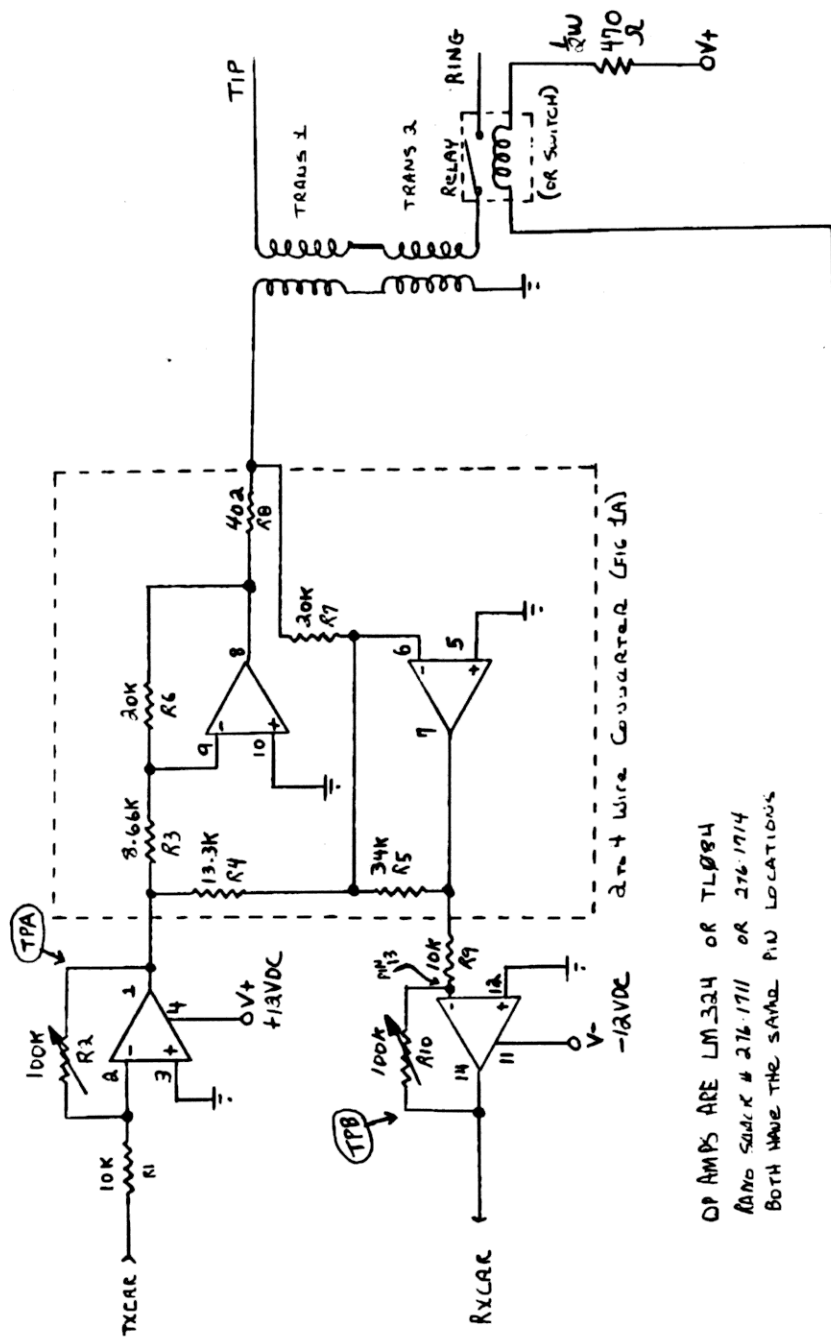
The transformers (see previous article for address to buy these) are 1:1. That is, there are the same number of turns of wire on the primary as there are on the secondary.

Adjustments to TXCAR and RXCAR

R2 and R10 are to adjust the transmit and receive level respectively. If you are using this circuit to talk and listen on the phone, adjust R10 until you are comfortable with what you hear from the other end. Adjust R2 until the person at the other end is comfortable with the volume they hear. For a modem, adjustment is a little more complex. Once connected to some transmitting device (modem or whatever) point TPA must be adjusted to -10.0 db plus or minus 1db. Point TPB must be adjusted so the receiver works properly. It requires some testing on your part. If you are receiving one modem ok and not another, simply adjust until both work properly.

I realize that some of the notes and adjustments are not easy to communicate clearly in print. That is why my home phone is included in this article. (408) 378-1723. If you have questions or comments, either leave a message to me on SBUG-80 bbs or phone me. I'll be happy to help you with other aspects of telephone problems too. Until then, Happy Hacking.

=====



OP AMPS ARE LM324 OR TL084
 AND SOAK # 276-1711 OR 276-1714
 BOTH HAVE THE SAME PIN LOCATIONS

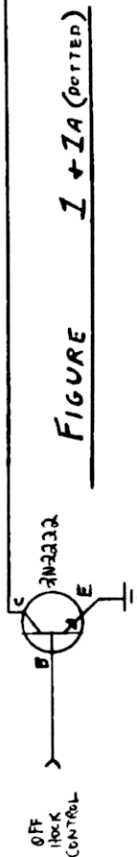


FIGURE 1 + 1A (PORTED)

SBUG-80 MAIL CORNER

<Message from IANWEBB at SBUG-80 09/12/83 15:35:44>
RE: M O D E L IV C P / M

Model 4 CP/M 2.2 is available as follows:

Montezuma Micro
P.O. Box 32027
Dallas, TX 75232

(800) 527-0347
(800) 442-1310

\$199.95

Is said to have a conversion module which will allow the reading of 20 or so formats, including 35, 40, 77 and 80 track. Apparently DOESN'T allow 8" drive use, but that is not for sure. Will support RAMDISK in the upper 64K bank of memory. Operates on a 64K machine. Comes with MODEM 7 and utility programs.

Who will be the first to part with their \$\$\$? I am still trying to track down the author (local person).

<Message from RON at SBUG-80 09/15/83 06:57:11>
RE: HELP DESIGN LARGE MOD 1 DATABASE

At last I ran into someone who has a real & urgent use for the computer: someone in TX who keeps 150 byte records (text with a number of fields) that describe oil leases.

They need a fast database that can selectively search and retrieve based on selection inputs (key searches).

Eventually there will be 5 megabytes (a winchester). Also, a "host" pgm will allow dial-in users to retrieve the data, as if they were on the kbd/crt, but the database seems to be the biggest hurdle.

What / how ??? (Thanks for any ideas!)

<Message from ROGERAND at SBUG-80 09/15/83 07:13:53>
RE: RON'S TEXAS CONNECTION

HI RON, HOW ABOUT AIDS III VERSION 2 SEE MICRO DATA SUPPLIES AD IN 80 MICRO.

<Message from IANWEBB at SBUG-80 09/15/83 22:11:03>
RE: T E X X X A A S S S Y'ALL

I NOTICE THAT PFS IS NOW AVAILABLE FOR THE TRS-80.
PERHAPS NOT FOR THE MODEL 1. I SUSPECT ENB MIGHT BE A GOOD

OCTOBER 83

CHOICE. WHY NOT ASK MIKE MCHENRY, OUR RESIDENT INDEXER?

<Message from RON at SBUG-80 09/16/83 01:33:03>
RE: DATABASE: WINCHESTER SUPPORT?

THANKS FOR SUGGESTIONS OF ENB, AIDS III, (&PFS&INDEXER). DOES ANYONE HAVE ANY IDEA IF THEY CAN ACCESS HUGE FILES? HOW LONG WOULD A SEARCH (INDEXED) TAKE TO FIND ALL, E.G. KEY1 AND KEY3 AND KEY4 (WHERE THE KEYS ARE FIELDS 15 BYTES) OUT OF 50,000 RECORDS (7.5MB) WHERE ONLY A FEW MATCHED SEARCH CRITERIA ???

<Message from GLENN at SBUG-80 09/16/83 18:30:10>
RE: RON'S QUESTION

Probably longer than I would care to wait (4 keys is a lot). Though there is an alternative - RM-COBOL it supports multiple keys.

Glenn

<Message from GLENN at SBUG-80 09/16/83 21:19:24>
RE: NEEDED A BOOK...

I need to borrow one or more texts on LISP as I am trying to evaluate a LISP SYSTEM and don't know beans about the language. The main text I need is "lisp" by P.H. Winston and B.K. Horn. If you have this book or any other on LISP I would be grateful if you could let me borrow it.

Glenn

<Message from PHANTOM at SBUG-80 09/16/83 23:17:15>
RE: MODEL I FOR SALE

I SAW GLEN'S ADD ABOUT WANTING A MODEL I. I HAVE ONE FOR SALE AND WILL SELL FOR A REASONABLE PRICE.

ANY INTERESTED PEOPLE CAN REACH ME AT 984-8779.
WORK 248 8770
ANSWERING SRV 985 2945
THANKS, RICHARD

<Message from JIBBYTRM at SBUG-80 09/17/83 08:49:42>
RE: I'M STILL HERE

HELLO FROM AN OLD TIMER

IT SEEMS AS THOUGH THIS BULLETIN BOARD ONLY HAS A FEW MEMBERS FROM THE CLUB USING IT. SEEMS LIKE THE SAME PEOPLE TALKING TO EACH OTHER ALL THE TIME. WHAT HAS HAPPENED TO THE REST OF THE MEMBERSHIP ON THIS SYSTEM ???
ARE WE ALL BUSY ????? PROBABLY !!!!!

ANYWAY, I HAVE BEEN REBUILDING 2 BMWs AND GETTING KIDS MARRIED AND HAVEN'T HAD MUCH TIME TO GET ON THE BOARD. BESIDES THE ECONOMY IS PICKING UP AT WORK AND WE ARE BUSY AS HELL !!!

SOUTH BAY TRS-80 USERS GROUP

I HAVE SOME QUESTIONS ON THE MOD IV THAT MAYBE SOME OF YOU NEW OWNERS MAY BE ABLE TO ANSWER.

- 1.) WHEN USING THE 64K MEMORY BANK SWITCHING, WHAT HAPPENS IF YOUR PROGRAM OVERLAPS INTO THE UPPER BANK DURING EXECUTION ??? IS THERE ANY OBSERVABLE SLOWDOWN OF THE PROGRAM ???
- 2.) SINCE I HAVEN'T BEEN TO MANY MEETINGS LATELY, WHAT HAS BEEN THE RESPONSE OF THE MOD IV. DOES THE CPM WORK WELL ???
- 3.) DOES ANYONE HAVE THE MOST RECENT NEWDOS80 THAT SUPPORTS HARD DISK AND HOW IS IT WORKING ????
- 4.) HOW IS OUR LIBRARY DOING, DO WE HAVE SOME SOFTWARE NOW.
- 5.) HAS ANYONE FOUND A DIRECTORY PROGRAM THAT WILL READ THE DIRECTORY AND PRINT IT ON 1 X 3 LABELS SO THAT THE DISC NUMBER CAN BE PRINTED. DIRECTORY PROGRAMS ARE GREAT AS LONG AS YOU KNOW THE DISC NUMBER. THE NEW DIRECTORY PROGRAMS THAT ARE ON THE BOARD, CAN THEY HANDLE ALPHA NUMERIC DISC NOS. ??? 4 DIGITS ???

WELL THATS ENOUGH TO START WITH. I'LL START GETTING BACK INVOLVED IN THE NEAR FUTURE. WHAT IS THE STATUS ON THE NEW STEERING COMMITTEE ??? WHO'S RUNNING ???

HERE'S LOOKING AT YOU
<JIBBYTRM>

<Message from IANWEBB at SBUG-80 09/17/83 13:10:49>
RE: SPLIT PROGRAMS & JIBBY QUESTIONS

The split program is documented in the INDEX. Type DO INDEX <ENTER> from SBUG Ready if you haven't used the index before. I wrote the version on the system now by adapting a Model I program in 80 US, Sept/Oct 1980, pg.43, which Chet Kemp (KEMP) said he wished would work on the Model III/IV. I have tried to use the switched memory on the Model IV in the save program and still have a glitch which I haven't worked out. They are difficult to debug when spanning across the memory banks!

As far as I know, NO one in the club has CP/M for the Model 4 yet. I have located (Montezuma Software \$199.95) CP/M 2.2 plus utilities, but I don't believe anyone has purchased it yet. I am still trying to locate the author who lives in San Jose, but have not caught up with him yet. Everyone no longer has a telephone number or hasn't seen him for 6 months.

I don't understand your question, Bill, about programs spanning the memory. The technique I used was to stay in low memory with my program, LDJR code to high memory and then jump there if I wanted to jump into a switched bank. Is that what you are asking?

OCTOBER 83

<Message from JIBBYTRM at SBUG-80 09/18/83 09:18:48>
RE: BANKS OF MEMORY IN THE MOD IV

IAN

WHAT I AM TALKING ABOUT IS THAT THE Z80 CAN ONLY ADDRESS 64K MAX. WITH AN ADDITIONAL 64K FOR THE Z80 TO ACCESS IT MUST TAKE SOME TIME FOR THE Z80 TO REARRANGE ITSELF TO LOOK AT THE OTHER 64K OF DATA AND SAVE THE DATA IN THE LOWER 64 WHAT I'M TALKING ABOUT IS A PROGRAM THAT IS LARGE ENOUGH TO TAKE UP SAY 70K OF MEMORY. HOW DOES THE MOD IV HANDLE THE OTHER 6K WHEN IT RUNS THE PROGRAM ???

WHAT ARE THE RULES REGARDING THE USE OF THE 128K IN THE MOD IV ???

TEN FOUR AND OUT...

<Message from BILLRAM at SBUG-80 09/18/83 10:43:25>
RE: NEWDOS/80 MOD I ZAPS

Has anyone received ZAPS for the MOD I which will allow use of the new SuperScript (version 1.02) for Mod I? This is a repeat question from several days (weeks) ago, but there was no response then, I still am wondering....

<Message from BILLRAM at SBUG-80 09/18/83 10:50:21>
RE: Mod 100 MODEM

I am now in my second series of problems regarding my MOD 100 modem. It dials, connects, etc., but does not generate an "answer" tone when the dialed computer makes its connection. I took it to RS once, and they gave me a new cable, (which seemed to work) but again the problem appears. Has anyone else had this problem???

How often do Mod 100 members experience a "year" change in the date which appears when at warm start-up level?? It hasn't happened to me for a long time, but I do know that several have had the year change in the past. I know that time flies, but this is ridiculous...1986 already!!!

<Message from IANWEBB at SBUG-80 09/18/83 11:43:28>
RE: MODE 4 BANK SWITCHING

The model 4 bank switches 32K at a time. When using the Model III mode, you MUST leave the bottom 32K undisturbed as far as I can tell. You can switch either of the extra 32K banks into the top 32K of memory and then return to the "original" configuration with another byte sent to the proper port. Every time I have tried to copy the operating system and ROM to a bank in upper memory with an LDIR and then tried to transfer that bank from the extra area into the lower memory, the system crashes.

SOUTH BAY TRS-80 USERS GROUP

I have a suspicion that you could write a machine lang program that would jump to upper memory, copy the required information, swap lower memory and then jump back, allowing you to then modify lower memory and previously ROMed code. I haven't had time to try that however. Rebooting the system DOES NOT disturb the two extra 32K banks as far as I can tell and the code is still intact when examining those banks.

<Message from ROGERAND at SBUG-80 09/18/83 19:12:20>
RE: ZAPS AND SCRIPSIT

THE LAST SET OF ZAPS I GOT FROM APPARAT IS CURRENT TO ZAP #90. THIS SET CAME WITH A COMPLETE INDEX.
SCRIPSIT ZAPS ARE:

51 MODEL I CASSETTE I/O
83 R. S. MODEL I SUPERSCRIPSIT V1.0
3 RADIO SHACKS MODEL I SCRIPSIT
38 DOUBLE DENSITY & END COMMAND
51 IS INFORMATIONAL
83 & 3 ARE MANDATORY
38 IS OPTIONAL

<Message from RON at SBUG-80 09/19/83 13:05:27>
RE: MOD 100 STUFF

My date does jump a year sometimes but only to 1984. I thought I was seeing things! I "SAVE"d 2 pams here (not indexed yet: could some one check them & let me know if ok. RFU/ONE and SUBLIB/ONE

I don't remember if I managed to get XMODEM/ONE up here before it wiped out everything in my 100 mem. (I think some of these are on Anton's TBBS 4156514147)

<Message from ROGERAND at SBUG-80 09/22/83 15:18:10>
RE: SBUG USERS
Read command :

NONE ON THE SYSTEM SHOULD BE SELF CONSCIOUS ABOUT ASKING QUESTIONS OR SUBMITTING PROGRAMS ON THIS SYSTEM. THE LEVELS OF EXPERTISE IN THE CLUB RANGE FROM THE NOVICE TO THE SUPER EXPERT.

WHEN I STARTED OUT I WAS A SUBNOVICE AND HAVE GRADUATED TO SOMEWHERE BETWEEN NOVICE AND EXPERT(CLOSER TO NOVICE). MY ADVANCEMENT HAS COME ABOUT BY ASKING "DUMB" QUESTIONS AND HAVING SOMEONE ON THE BOARD OR IN THE CLUB COME FORTH AND ANSWER MY QUESTION.

NO MATTER WHO YOU ARE YOU PROBABLY KNOW SOMETHING ABOUT SOMETHING THAT SOMEBODY ELSE WOULD LIKE TO LEARN.

IT IS BETTER TO AID ONE HACKER THEN TO HACK AWAY IN ANONYMITY.

OCTOBER 83

SEND US YOUR WHEAT AND YOUR CHAFF WE'LL CONSUME YOUR
WHEAT AND UPGRADE YOUR CHAFF.
ROGERAND

<Message from IANWEBB at SBUG-80 09/22/83 17:39:02>
RE: 25 CTS

MSILLS and ROGERAND make very good points. The thing
I see is that, no matter how novice or expert one feels
themselves to be, others are apt to be interested in what
they are doing, the programs they are working on, and the
things that they are discovering. If it is interesting to
you, NO MATTER HOW NOVICE OR EXPERT YOU BELIEVE YOU ARE,
why not share it with some other novices or experts? i.e.
Write it up for Dynamic Memories!
Ian

<Message from RON at SBUG-80 09/23/83 10:31:15>
RE: Mod 4 CP/M is around

The CP/M 2.2 from Montezuma is in at Strawflower in
Half Moon Bay. Also a co. called DiskCount Data in Plano TX
says they sold 100's already. No complaints.

<Message from RON at SBUG-80 09/23/83 10:31:22>
RE: Mod 100 escape codes

(S100) Microsystems has a brief note saying the 100
uses the same as the DEC VT52, except reverse video.
(Escape codes are 1 or a few chars preceded by the ASCII
<esc> (27.) which cause the display to do such fancy things
as delete rest of line, move cursor to top of screen, etc.)

South Bay TRS-80 Users Group
P.O. Box 60116
Sunnyvale, Ca 94088

FIRST CLASS MAIL